

SERIES DX

Slurry Knife Gate Valve



- ▶ Fully elastomer lined
- ▶ 100% full-port design
- ▶ Eliminates need for packing
- ▶ Abrasion resistant slurry sleeves
- ▶ Bi-directional, drop-tight shut-off
- ▶ Eliminates seat cavity which prevents slurry build-up or dewatering

Red Valve's Series DX Slurry Knife Gate Valve is the most durable and user-friendly knife gate valve for difficult slurry applications. The fully elastomer-lined DX Valve prevents slurry build-up or dewatering by eliminating the seat cavity.

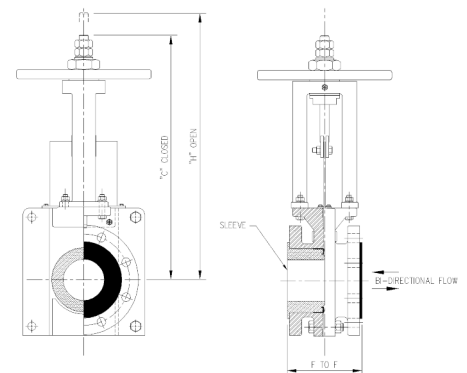
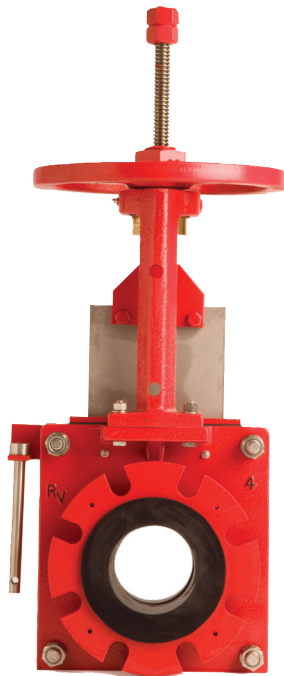
When open, the DX Valve's reinforced elastomer sleeves seal against each other and provide a 100% full-port opening which minimizes turbulence and wear. In this open position, the seats isolate and protect all metal parts of the valve from coming in contact with the process. When closed, the sleeves provide a drop-tight seal in both directions.

Each time the DX Valve strokes, it discharges a small amount of slurry, which keeps the gate path and seat area clear of entrapped particulates. Unlike traditional knife gate valves, the DX prevents slurry build-up in the seat area, which might otherwise prohibit the valve's ability close. Both the slurry sleeves and gate are field replaceable.

A wiper blade mounted on top of the valve prevents the gate lubricant and process from leaking through the top. The DX Valve design eliminates the need for traditional packing. This wiper blade also prevents external grit from entering the valve body.

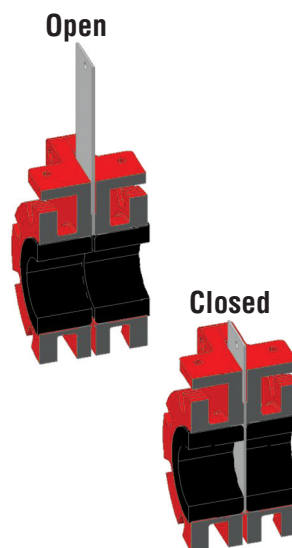
Extensive in-house testing and proprietary formulation of elastomers allows Red Valve to guarantee our sleeves against fatigue or loss of compression for 50,000 cycles!

To control slurry discharging from slot in the valve, a plate style splash guard is utilized. Optional systems to pipe or flush the slurry away are also available.



Materials of Construction

- ▶ Ductile iron body standard 3" - 24"
- ▶ Fabricated steel body 26" - 36"
- ▶ Available sleeve materials: Pure Gum Rubber, Neoprene, Hypalon®, Chlorobutyl, BUNA-N, EPDM or Viton®
- ▶ Standard gate material: 316L S.S.
- ▶ Optional gate materials: 17-4PH, 317L, 904L, duplex, alloy 20 and C-276
- ▶ Optional proprietary gate coatings: PTFE, PFA and FEP
- ▶ Optional splash guard and pipe-a-way containment



Series DX Slurry Knife Gate

| Valve Size | Length F to F | | Closed C | Open H |
|------------|---------------------------|------------------------|----------|---------|
| | Without Retaining Flanges | With Retaining Flanges | | |
| 3" | 5.875" | 6.875" | 17.13" | 20.38" |
| 4" | 5.875" | 6.875" | 18.25" | 22.63" |
| 6" | 6" | 7" | 21.06" | 27.18" |
| 8" | 6.25" | 7.25" | 26.56" | 34.56" |
| 10" | | 8.875" | 32.44" | 43.63" |
| 12" | | 10.125" | 37" | 50.88" |
| 14" | | 10.125" | 43.63" | 57.63" |
| 16" | | 11" | 47.5" | 63" |
| 18" | | 12.125" | 52.63" | 70" |
| 20" | | 14.125" | 57.94" | 74.13" |
| 24" | | 14.625" | 66.68" | 86.94" |
| 30" | | 15.75" | 88.63" | 120.63" |

Retaining rings are optional in valve sizes 3" - 8" and standard in sizes 10" and larger.

36" and 42" available upon request.